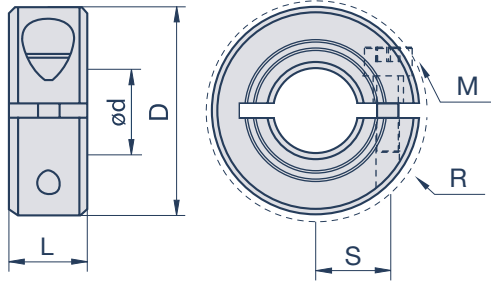


Clampmax in pezzo unico MCL

Alluminio, Acciaio brunito, Acciaio zincato, Acciaio inox, Accetale



Spesifikationen

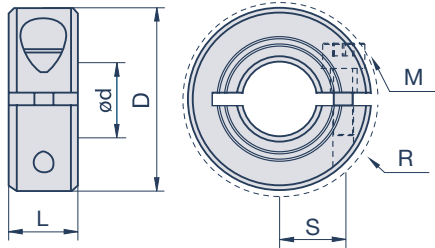
Codice Prodotto						d	D	S	R	L	M
Alluminio	Acciaio brunito	Acciaio zincato*	Acciaio inox 1.4305	Acciaio inox 1.4404	Accetale	mm	mm	mm	mm	mm	
MCL-3-A	MCL-3-F	MCL-3-FZ	MCL-3-SS			3	16	5,51	20,8	9	M3x8
MCL-4-A	MCL-4-F	MCL-4-FZ	MCL-4-SS	MCL-4-ST	MCL-4-P	4	16	5,51	20,8	9	M3x8
MCL-5-A	MCL-5-F	MCL-5-FZ	MCL-5-SS	MCL-5-ST	MCL-5-P	5	16	5,51	20,8	9	M3x8
MCL-6-A	MCL-6-F	MCL-6-FZ	MCL-6-SS	MCL-6-ST	MCL-6-P	6	16	5,51	20,8	9	M3x8
MCL-7-A	MCL-7-F	MCL-7-FZ	MCL-7-SS			7	18	6,5	22,4	9	M3x8
MCL-8-A	MCL-8-F	MCL-8-FZ	MCL-8-SS	MCL-8-ST	MCL-8-P	8	18	6,5	22,4	9	M3x8
MCL-9-A	MCL-9-F	MCL-9-FZ	MCL-9-SS			9	24	8,51	26,3	9	M3x10
MCL-10-A	MCL-10-F	MCL-10-FZ	MCL-10-SS	MCL-10-ST	MCL-10-P	10	24	8,51	26,3	9	M3x10
MCL-11-A	MCL-11-F	MCL-11-FZ	MCL-11-SS			11	28	10,01	32,0	11	M4x12
MCL-12-A	MCL-12-F	MCL-12-FZ	MCL-12-SS	MCL-12-ST	MCL-12-P	12	28	10,01	32,0	11	M4x12
MCL-13-A	MCL-13-F	MCL-13-FZ	MCL-13-SS			13	30	11,0	33,7	11	M4x14
MCL-14-A	MCL-14-F	MCL-14-FZ	MCL-14-SS	MCL-14-ST	MCL-14-P	14	30	11,0	33,7	11	M4x14
MCL-15-A	MCL-15-F	MCL-15-FZ	MCL-15-SS	MCL-15-ST	MCL-15-P	15	34	12,5	39,3	13	M5x16
MCL-16-A	MCL-16-F	MCL-16-FZ	MCL-16-SS	MCL-16-ST	MCL-16-P	16	34	12,5	39,3	13	M5x16
MCL-17-A	MCL-17-F	MCL-17-FZ	MCL-17-SS			17	36	13,49	41,1	13	M5x16
MCL-18-A	MCL-18-F	MCL-18-FZ	MCL-18-SS			18	36	13,49	41,1	13	M5x16
MCL-19-A	MCL-19-F	MCL-19-FZ	MCL-19-SS			19	40	14,73	47,4	15	M6x16
MCL-20-A	MCL-20-F	MCL-20-FZ	MCL-20-SS	MCL-20-ST	MCL-20-P	20	40	14,73	47,4	15	M6x16
MCL-21-A	MCL-21-F	MCL-21-FZ	MCL-21-SS			21	42	16	49,5	15	M6x16
MCL-22-A	MCL-22-F	MCL-22-FZ	MCL-22-SS			22	42	16	49,5	15	M6x16
MCL-23-A	MCL-23-F	MCL-23-FZ	MCL-23-SS			23	45	17,5	52,1	15	M6x16
MCL-24-A	MCL-24-F	MCL-24-FZ	MCL-24-SS			24	45	17,5	52,1	15	M6x16
MCL-25-A	MCL-25-F	MCL-25-FZ	MCL-25-SS	MCL-25-ST	MCL-25-P	25	45	17,5	52,1	15	M6x16
MCL-26-A	MCL-26-F	MCL-26-FZ	MCL-26-SS			26	48	19	54,7	15	M6x16
MCL-28-A	MCL-28-F	MCL-28-FZ	MCL-28-SS			28	48	19	54,7	15	M6x16
MCL-30-A	MCL-30-F	MCL-30-FZ	MCL-30-SS	MCL-30-ST	MCL-30-P	30	54	21,49	59,2	15	M6x18

M= Dimensione delle viti, S= Distanza asse viti, R= Ingombro
Tolleranza dei fori: +0,050mm / +0,012mm



Clampmax in pezzo unico MCL

Alluminio, Acciaio brunito, Acciaio zincato, Acciaio inox, Acetale



Spesifikationen

Codice Prodotto						d	D	S	R	L	M
Alluminio	Acciaio brunito	Acciaio zincato*	Acciaio inox 1.4305	Acciaio inox 1.4404	Acetale	mm	mm	mm	mm	mm	
MCL-32-A	MCL-32-F	MCL-32-FZ	MCL-32-SS			32	54	21,49	59,2	15	M6x18
MCL-34-A	MCL-34-F	MCL-34-FZ	MCL-34-SS			34	57	23,24	62,4	15	M6x18
MCL-35-A	MCL-35-F	MCL-35-FZ	MCL-35-SS			35	57	23,24	62,4	15	M6x18
MCL-36-A	MCL-36-F	MCL-36-FZ	MCL-36-SS			36	57	23,24	62,4	15	M6x18
MCL-38-A	MCL-38-F	MCL-38-FZ	MCL-38-SS			38	60	24,99	65,6	15	M6x18
MCL-40-A	MCL-40-F	MCL-40-FZ	MCL-40-SS	MCL-40-ST		40	60	24,99	65,6	15	M6x18
MCL-42-A	MCL-42-F	MCL-42-FZ	MCL-42-SS			42	73	29,49	80,1	19	M8x25
MCL-45-A	MCL-45-F	MCL-45-FZ	MCL-45-SS			45	73	29,49	80,1	19	M8x25
MCL-48-A	MCL-48-F	MCL-48-FZ	MCL-48-SS			48	78	32,0	84,7	19	M8x25
MCL-50-A	MCL-50-F	MCL-50-FZ	MCL-50-SS	MCL-50-ST		50	78	32,0	84,7	19	M8x25
	MCL-54-F		MCL-54-SS			54	82	34,24	88,8	19	M8x25
	MCL-55-F		MCL-55-SS			55	82	34,24	88,8	19	M8x25
	MCL-60-F		MCL-60-SS			60	88	37,01	94,0	19	M8x25
	MCL-65-F		MCL-65-SS			65	93	39,50	99,8	19	M8x25
	MCL-70-F		MCL-70-SS			70	98	42,10	104,5	19	M8x25
	MCL-75-F		MCL-75-SS			75	103	44,50	109,1	19	M8x25
	MCL-80-F		MCL-80-SS			80	108	46,99	113,8	19	M8x25

M= Dimensione delle viti, S= Distanza asse viti, R= Ingombro
Tolleranza dei fori: +0,050mm / +0,012mm

*Nota bene: per il Clampmax MCL-FZ | acciaio zincato si applicano quantità minime d'ordine.
Maggiori informazioni su richiesta.



„breve e dolce ...
spiegato“

I NOSTRI PITTOGRAMMI



Numerosi materiali



Montabile radialmente



Applicazioni pesanti



Per grandi diametri dell'albero



Montabile senza attrezzi