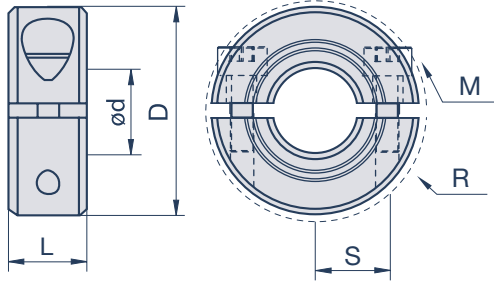


Clampmax Korrosionsbeständig MSP-SS/MSP-ST
Zweitteilig | Edelstahl



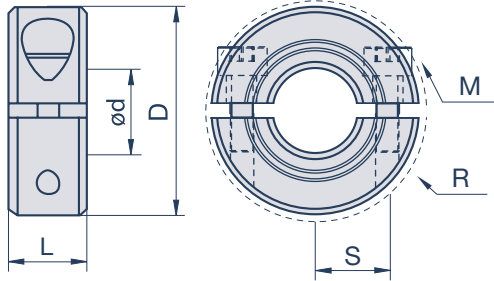
Spezifikationen

| Modell | | d | D | S | R | L | M |
|------------------|------------------|----|----|-------|------|----|-------|
| Edelstahl 1.4305 | Edelstahl 1.4404 | mm | mm | mm | mm | mm | |
| MSP-3-SS | | 3 | 16 | 5,51 | 20,8 | 9 | M3X8 |
| MSP-4-SS | MSP-4-ST | 4 | 16 | 5,51 | 20,8 | 9 | M3X8 |
| MSP-5-SS | MSP-5-ST | 5 | 16 | 5,51 | 20,8 | 9 | M3X8 |
| MSP-6-SS | MSP-6-ST | 6 | 16 | 5,51 | 20,8 | 9 | M3X8 |
| MSP-7-SS | | 7 | 18 | 6,5 | 22,4 | 9 | M3X8 |
| MSP-8-SS | MSP-8-ST | 8 | 18 | 6,5 | 22,4 | 9 | M3X8 |
| MSP-9-SS | | 9 | 24 | 8,51 | 26,3 | 9 | M3X10 |
| MSP-10-SS | MSP-10-ST | 10 | 24 | 8,51 | 26,3 | 9 | M3X10 |
| MSP-11-SS | | 11 | 28 | 10,01 | 32,0 | 11 | M4X12 |
| MSP-12-SS | MSP-12-ST | 12 | 28 | 10,01 | 32,0 | 11 | M4X12 |
| MSP-13-SS | | 13 | 30 | 11,0 | 33,7 | 11 | M4X14 |
| MSP-14-SS | MSP-14-ST | 14 | 30 | 11,0 | 33,7 | 11 | M4X14 |
| MSP-15-SS | MSP-15-ST | 15 | 34 | 12,5 | 39,3 | 13 | M5X16 |
| MSP-16-SS | MSP-16-ST | 16 | 34 | 12,5 | 39,3 | 13 | M5X16 |
| MSP-17-SS | | 17 | 36 | 13,49 | 41,1 | 13 | M5X16 |
| MSP-18-SS | | 18 | 36 | 13,49 | 41,1 | 13 | M5X16 |
| MSP-19-SS | | 19 | 40 | 14,73 | 47,4 | 15 | M6X16 |
| MSP-20-SS | MSP-20-ST | 20 | 40 | 14,73 | 47,4 | 15 | M6X16 |
| MSP-21-SS | | 21 | 42 | 16 | 49,5 | 15 | M6X16 |
| MSP-22-SS | | 22 | 42 | 16 | 49,5 | 15 | M6X16 |
| MSP-23-SS | | 23 | 45 | 17,5 | 52,1 | 15 | M6X16 |
| MSP-24-SS | | 24 | 45 | 17,5 | 52,1 | 15 | M6X16 |
| MSP-25-SS | MSP-25-ST | 25 | 45 | 17,5 | 52,1 | 15 | M6X16 |
| MSP-26-SS | | 26 | 48 | 19 | 54,7 | 15 | M6X16 |
| MSP-28-SS | | 28 | 48 | 19 | 54,7 | 15 | M6X16 |
| MSP-30-SS | MSP-30-ST | 30 | 54 | 21,49 | 59,2 | 15 | M6X18 |

M= Schraubengröße, S= Schraubenlage, R= Raumbedarf
Bohrungstoleranz: +0,050mm / +0,012mm



Clampmax Korrosionsbeständig MSP-SS/MSP-ST Zweitteilig | Edelstahl



Spezifikationen

| Modell | | d | D | S | R | L | M |
|------------------|------------------|----|-----|-------|-------|----|-------|
| Edelstahl 1.4305 | Edelstahl 1.4404 | mm | mm | mm | mm | mm | |
| MSP-32-SS | | 32 | 54 | 21,49 | 59,2 | 15 | M6X18 |
| MSP-34-SS | | 34 | 57 | 23,24 | 62,4 | 15 | M6X18 |
| MSP-35-SS | | 35 | 57 | 23,24 | 62,4 | 15 | M6X18 |
| MSP-36-SS | | 36 | 57 | 23,24 | 62,4 | 15 | M6X18 |
| MSP-38-SS | | 38 | 60 | 24,99 | 65,6 | 15 | M6X18 |
| MSP-40-SS | MSP-40-ST | 40 | 60 | 24,99 | 65,6 | 15 | M6X18 |
| MSP-42-SS | | 42 | 73 | 29,49 | 80,1 | 19 | M8X25 |
| MSP-45-SS | | 45 | 73 | 29,49 | 80,1 | 19 | M8X25 |
| MSP-48-SS | | 48 | 78 | 32,0 | 84,7 | 19 | M8X25 |
| MSP-50-SS | MSP-50-ST | 50 | 78 | 32,0 | 84,7 | 19 | M8X25 |
| MSP-54-SS | | 54 | 82 | 34,24 | 88,8 | 19 | M8X25 |
| MSP-55-SS | | 55 | 82 | 34,24 | 88,8 | 19 | M8X25 |
| MSP-60-SS | | 60 | 88 | 37,01 | 94,0 | 19 | M8X25 |
| MSP-65-SS | | 65 | 93 | 39,50 | 99,8 | 19 | M8X25 |
| MSP-70-SS | | 70 | 98 | 42,10 | 104,5 | 19 | M8X25 |
| MSP-75-SS | | 75 | 103 | 44,50 | 109,1 | 19 | M8X25 |
| MSP-80-SS | | 80 | 108 | 46,99 | 113,8 | 19 | M8X25 |

M= Schraubengröße, S= Schraubenlage, R= Raumbedarf
Bohrungstoleranz: +0,050mm / +0,012mm



„kurz & knapp ...
erklärt“

UNSERE PIKTOGRAMME



Korrosionsbeständig



Radial montierbar



Schwerlastanwendungen



Für große Wellendurchmesser



Werkzeugfrei montierbar