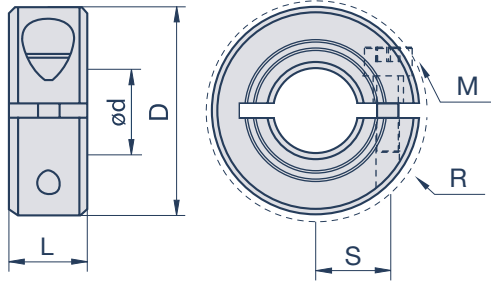


## Clampmax Einteilig MCL

Aluminium, Stahl brüniert, Stahl verzinkt, Edelstahl, Acetal



### Spezifikationen

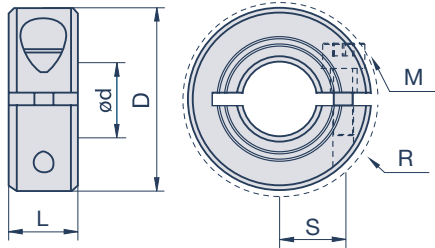
| Modell    |                |                 |                  |                  |          | d  | D  | S     | R    | L  | M     |
|-----------|----------------|-----------------|------------------|------------------|----------|----|----|-------|------|----|-------|
| Aluminium | Stahl brüniert | Stahl verzinkt* | Edelstahl 1.4305 | Edelstahl 1.4404 | Acetal   | mm | mm | mm    | mm   | mm |       |
| MCL-3-A   | MCL-3-F        | MCL-3-FZ        | MCL-3-SS         |                  |          | 3  | 16 | 5,51  | 20,8 | 9  | M3x8  |
| MCL-4-A   | MCL-4-F        | MCL-4-FZ        | MCL-4-SS         | MCL-4-ST         | MCL-4-P  | 4  | 16 | 5,51  | 20,8 | 9  | M3x8  |
| MCL-5-A   | MCL-5-F        | MCL-5-FZ        | MCL-5-SS         | MCL-5-ST         | MCL-5-P  | 5  | 16 | 5,51  | 20,8 | 9  | M3x8  |
| MCL-6-A   | MCL-6-F        | MCL-6-FZ        | MCL-6-SS         | MCL-6-ST         | MCL-6-P  | 6  | 16 | 5,51  | 20,8 | 9  | M3x8  |
| MCL-7-A   | MCL-7-F        | MCL-7-FZ        | MCL-7-SS         |                  |          | 7  | 18 | 6,5   | 22,4 | 9  | M3x8  |
| MCL-8-A   | MCL-8-F        | MCL-8-FZ        | MCL-8-SS         | MCL-8-ST         | MCL-8-P  | 8  | 18 | 6,5   | 22,4 | 9  | M3x8  |
| MCL-9-A   | MCL-9-F        | MCL-9-FZ        | MCL-9-SS         |                  |          | 9  | 24 | 8,51  | 26,3 | 9  | M3x10 |
| MCL-10-A  | MCL-10-F       | MCL-10-FZ       | MCL-10-SS        | MCL-10-ST        | MCL-10-P | 10 | 24 | 8,51  | 26,3 | 9  | M3x10 |
| MCL-11-A  | MCL-11-F       | MCL-11-FZ       | MCL-11-SS        |                  |          | 11 | 28 | 10,01 | 32,0 | 11 | M4x12 |
| MCL-12-A  | MCL-12-F       | MCL-12-FZ       | MCL-12-SS        | MCL-12-ST        | MCL-12-P | 12 | 28 | 10,01 | 32,0 | 11 | M4x12 |
| MCL-13-A  | MCL-13-F       | MCL-13-FZ       | MCL-13-SS        |                  |          | 13 | 30 | 11,0  | 33,7 | 11 | M4x14 |
| MCL-14-A  | MCL-14-F       | MCL-14-FZ       | MCL-14-SS        | MCL-14-ST        | MCL-14-P | 14 | 30 | 11,0  | 33,7 | 11 | M4x14 |
| MCL-15-A  | MCL-15-F       | MCL-15-FZ       | MCL-15-SS        | MCL-15-ST        | MCL-15-P | 15 | 34 | 12,5  | 39,3 | 13 | M5x16 |
| MCL-16-A  | MCL-16-F       | MCL-16-FZ       | MCL-16-SS        | MCL-16-ST        | MCL-16-P | 16 | 34 | 12,5  | 39,3 | 13 | M5x16 |
| MCL-17-A  | MCL-17-F       | MCL-17-FZ       | MCL-17-SS        |                  |          | 17 | 36 | 13,49 | 41,1 | 13 | M5x16 |
| MCL-18-A  | MCL-18-F       | MCL-18-FZ       | MCL-18-SS        |                  |          | 18 | 36 | 13,49 | 41,1 | 13 | M5x16 |
| MCL-19-A  | MCL-19-F       | MCL-19-FZ       | MCL-19-SS        |                  |          | 19 | 40 | 14,73 | 47,4 | 15 | M6x16 |
| MCL-20-A  | MCL-20-F       | MCL-20-FZ       | MCL-20-SS        | MCL-20-ST        | MCL-20-P | 20 | 40 | 14,73 | 47,4 | 15 | M6x16 |
| MCL-21-A  | MCL-21-F       | MCL-21-FZ       | MCL-21-SS        |                  |          | 21 | 42 | 16    | 49,5 | 15 | M6x16 |
| MCL-22-A  | MCL-22-F       | MCL-22-FZ       | MCL-22-SS        |                  |          | 22 | 42 | 16    | 49,5 | 15 | M6x16 |
| MCL-23-A  | MCL-23-F       | MCL-23-FZ       | MCL-23-SS        |                  |          | 23 | 45 | 17,5  | 52,1 | 15 | M6x16 |
| MCL-24-A  | MCL-24-F       | MCL-24-FZ       | MCL-24-SS        |                  |          | 24 | 45 | 17,5  | 52,1 | 15 | M6x16 |
| MCL-25-A  | MCL-25-F       | MCL-25-FZ       | MCL-25-SS        | MCL-25-ST        | MCL-25-P | 25 | 45 | 17,5  | 52,1 | 15 | M6x16 |
| MCL-26-A  | MCL-26-F       | MCL-26-FZ       | MCL-26-SS        |                  |          | 26 | 48 | 19    | 54,7 | 15 | M6x16 |
| MCL-28-A  | MCL-28-F       | MCL-28-FZ       | MCL-28-SS        |                  |          | 28 | 48 | 19    | 54,7 | 15 | M6x16 |
| MCL-30-A  | MCL-30-F       | MCL-30-FZ       | MCL-30-SS        | MCL-30-ST        | MCL-30-P | 30 | 54 | 21,49 | 59,2 | 15 | M6x18 |

M= Schraubengröße, S= Schraubenlage, R= Raumbedarf  
Bohrungstoleranz: +0,050mm / +0,012mm



## Clampmax Einteilig MCL

Aluminium, Stahl brüniert, Stahl verzinkt, Edelstahl, Acetal



### Spezifikationen

| Modell    |                |                 |                  |                  |        | d  | D   | S     | R     | L  | M     |
|-----------|----------------|-----------------|------------------|------------------|--------|----|-----|-------|-------|----|-------|
| Aluminium | Stahl brüniert | Stahl verzinkt* | Edelstahl 1.4305 | Edelstahl 1.4404 | Acetal | mm | mm  | mm    | mm    | mm |       |
| MCL-32-A  | MCL-32-F       | MCL-32-FZ       | MCL-32-SS        |                  |        | 32 | 54  | 21,49 | 59,2  | 15 | M6x18 |
| MCL-34-A  | MCL-34-F       | MCL-34-FZ       | MCL-34-SS        |                  |        | 34 | 57  | 23,24 | 62,4  | 15 | M6x18 |
| MCL-35-A  | MCL-35-F       | MCL-35-FZ       | MCL-35-SS        |                  |        | 35 | 57  | 23,24 | 62,4  | 15 | M6x18 |
| MCL-36-A  | MCL-36-F       | MCL-36-FZ       | MCL-36-SS        |                  |        | 36 | 57  | 23,24 | 62,4  | 15 | M6x18 |
| MCL-38-A  | MCL-38-F       | MCL-38-FZ       | MCL-38-SS        |                  |        | 38 | 60  | 24,99 | 65,6  | 15 | M6x18 |
| MCL-40-A  | MCL-40-F       | MCL-40-FZ       | MCL-40-SS        | MCL-40-ST        |        | 40 | 60  | 24,99 | 65,6  | 15 | M6x18 |
| MCL-42-A  | MCL-42-F       | MCL-42-FZ       | MCL-42-SS        |                  |        | 42 | 73  | 29,49 | 80,1  | 19 | M8x25 |
| MCL-45-A  | MCL-45-F       | MCL-45-FZ       | MCL-45-SS        |                  |        | 45 | 73  | 29,49 | 80,1  | 19 | M8x25 |
| MCL-48-A  | MCL-48-F       | MCL-48-FZ       | MCL-48-SS        |                  |        | 48 | 78  | 32,0  | 84,7  | 19 | M8x25 |
| MCL-50-A  | MCL-50-F       | MCL-50-FZ       | MCL-50-SS        | MCL-50-ST        |        | 50 | 78  | 32,0  | 84,7  | 19 | M8x25 |
|           | MCL-54-F       |                 | MCL-54-SS        |                  |        | 54 | 82  | 34,24 | 88,8  | 19 | M8x25 |
|           | MCL-55-F       |                 | MCL-55-SS        |                  |        | 55 | 82  | 34,24 | 88,8  | 19 | M8x25 |
|           | MCL-60-F       |                 | MCL-60-SS        |                  |        | 60 | 88  | 37,01 | 94,0  | 19 | M8x25 |
|           | MCL-65-F       |                 | MCL-65-SS        |                  |        | 65 | 93  | 39,50 | 99,8  | 19 | M8x25 |
|           | MCL-70-F       |                 | MCL-70-SS        |                  |        | 70 | 98  | 42,10 | 104,5 | 19 | M8x25 |
|           | MCL-75-F       |                 | MCL-75-SS        |                  |        | 75 | 103 | 44,50 | 109,1 | 19 | M8x25 |
|           | MCL-80-F       |                 | MCL-80-SS        |                  |        | 80 | 108 | 46,99 | 113,8 | 19 | M8x25 |

M= Schraubengröße, S= Schraubenlage, R= Raumbedarf  
Bohrungstoleranz: +0,050mm / +0,012mm

\*Bitte beachten Sie: Bei der Clampmax MCL-FZ | Stahl verzinkt gelten Mindestmengen-Abnahmen.  
Mehr dazu erfahren Sie auf Anfrage.



„kurz & knapp ...  
erklärt“

UNSERE PIKTOGRAMME



Verschiedene Materialien



Radial montierbar



Schwerlastanwendungen



Für große Wellendurchmesser



Werkzeugfrei montierbar